

TOMCONDOS.COM

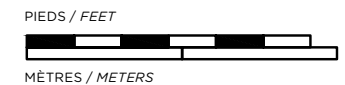
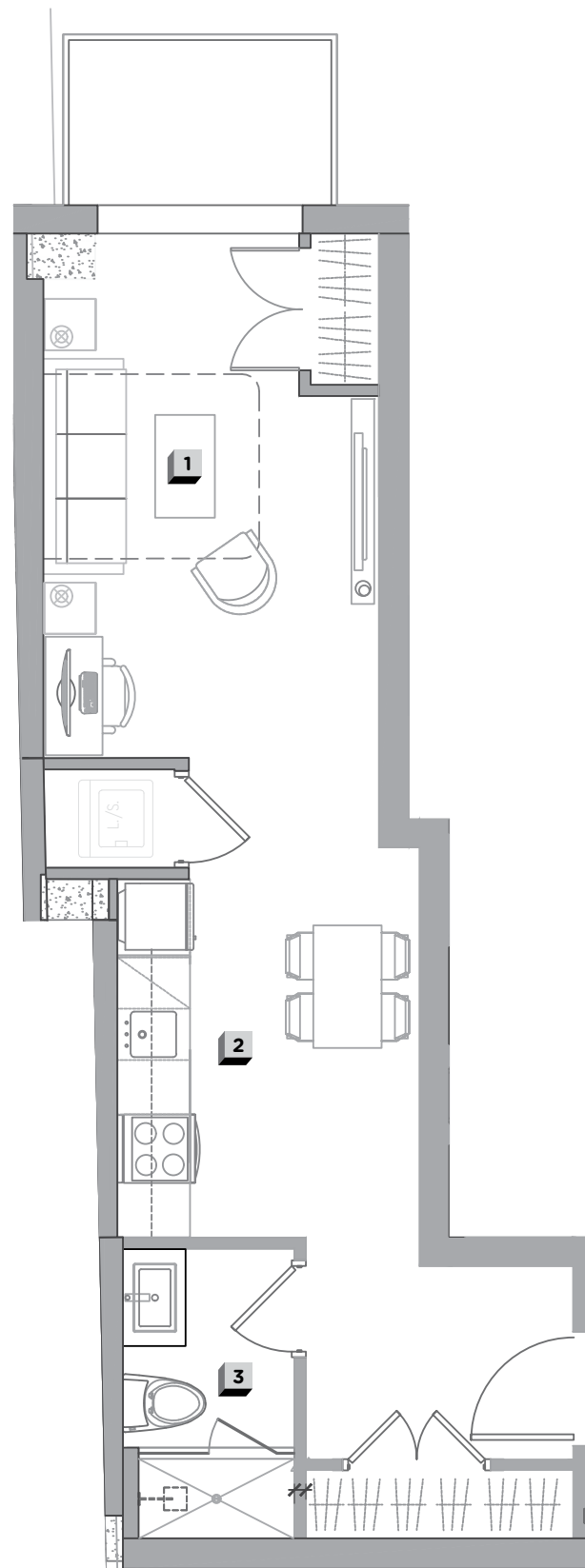
1185 UNIVERSITY
MONTRÉAL (QC)
H3B 1S5

T 514-244-5787

Superficie d'unité : Face extérieure du mur extérieur au centre des murs du corridor et des murs mitoyens. Toutes les dimensions, plans et prix peuvent être changés sans préavis.

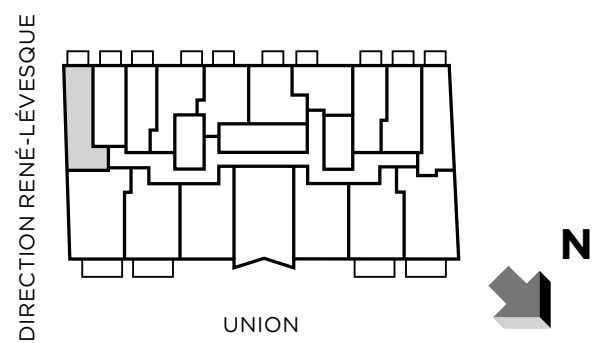
Unit Area : Outside face of exterior wall to middle of mitoyen walls and corridor walls. All dimensions, design and prices are subject to change without notice.

TOM
CONDOS



← DIRECTION RENÉ-LÉVESQUE

↑ DIRECTION UNIVERSITÉ



ÉTAGE / FLOOR
9-14

UNITÉ / UNIT
**918, 1018,
1118, 1218,
1418**

CHAMBRE / BUREAU
BEDROOM / DESK
LOFT

SALLE DE BAIN
BATHROOM
1

SUPERFICIE HABITABLE (PI² / M²)
LIVING SPACE (SQ² / M²)
485 / 45.07

BALCON (PI² / M²) / BALCONIE (SQ² / M²)
40 / 3.72

TOTAL (PI² / M²) / TOTAL (SQ² / M²)
525 / 48.79

1 SALON-CHAMBRE / LIVINGROOM-BEDROOM
18'-11" x 10' / 5.77 m x 3.05 m

2 SALLE-À-MANGER / DININGROOM
11' x 5' / 3.35 m x 1.5 m

3 CUISINE / KITCHEN
10'-6" x 4' / 3.2 m x 1.22 m

4 SALLE DE BAIN / BATHROOM
8'-6" x 4'-6" / 2.59 m x 1.37 m